



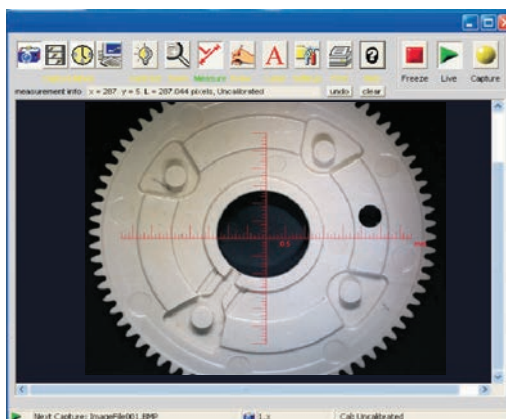
ImageCapture™

ImageCapture is a tool that lets you capture pictures or videos directly from the comparator screen. Add text and graphics to document part conditions, or create work instructions for measurement.

Features

- Capture still or video images
- Includes capturing and annotating software and digital megapixel camera
- Live Video caliper with overlays for Go/No Go capability
- Add text and labels to captured images
- Perform different types of measurements on the image:
 - Crosshair target
 - Box target
 - Protractor target
 - Circle target
 - Others
- Digital results of measurements are updated in real time
- Live on-screen reticle

Easily Document Measurements with Pictures and Video



ImageCapture lets you frame the shot, and capture the image for quick annotations.



Text and arrows can be positioned anywhere.



Use ImageCapture to create and view videos of your imaged part.



With calibrated overlays on the screen, the operator can compare a known dimension to the live image.

	Standard
Minimum Computer Requirements	Windows™ XP Professional or Windows 7 (32 or 64 bit), Pentium class processor, 32-bit or 64-bit architecture 128 MB RAM, 20 MB free space on hard drive, dual monitor support DVI/VGA card (800 x 600 min) required, CD-ROM drive, mouse, 104-key keyboard
Image and Video Formats	Capture in .jpg, .bmp, .tif, and Windows .avi (for video)
Connection	USB 2.0 frame grabber with S-Video, composite video input; NTSC and PAL formats; image size, up to 640 x 480 at 30 FPS for NTSC format
Systems Supported	CC-14, CC-16, CC-20 and CC-30



1175 North Street
Rochester, NY 14621
Phone: (585) 758-1300 • Fax: (585) 506-4307
www.certifiedcomparator.com

